

Novel design pigment

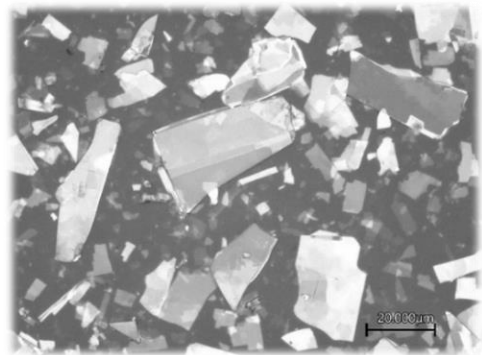
# SILKIA LPT-106

- ✓ LPT-106 can provide high whiteness and silky pearlescent color which can't be achieved by existing effect pigments such as metallic or pearl pigments.
- ✓ There is the trade-off between flip-flop property and graininess in the case of existing effect pearl pigments, but LPT-106 shows low graininess as well as high flip-flop property.
- ✓ While metallic pigments indicate color turbidity at shade angle, LPT-106 provides excellent chroma at every angle.

## Characteristics of SILKIA LPT-106

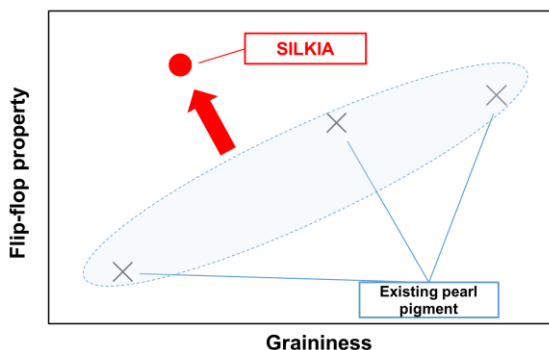
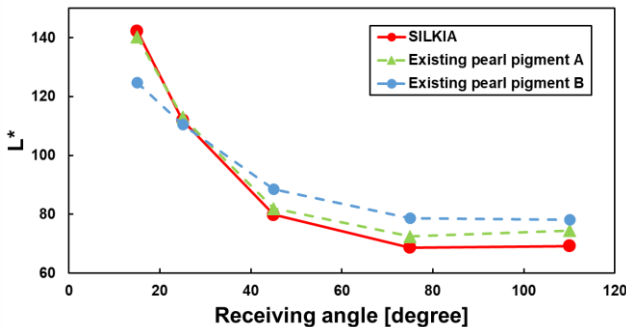
Particle diameter ( $\mu\text{m}$ )	10~35
Particle thickness ( $\mu\text{m}$ )	0.1
Titanate (%)	$\geq 80$

\*Example of measurement



Optical micrograph of SILKIA LPT-106

## Design of SILKIA LPT-106



Achieve a silk-like appearance  
No color turbidity occurs in the colored part

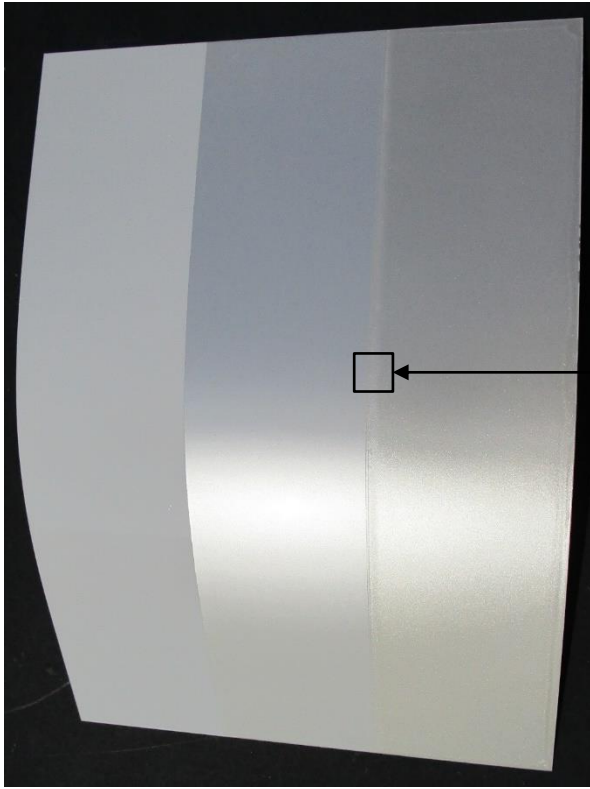
- ✓ Graininess and Flip-flop property of films were measured with the use of multi angle spectrophotometer (BYK-mac i).
- ✓ We also offer a "solvent-compatible type" that shows the same design with solvent-based paints.

"SILKIA" is a trademark or registered trademark of Ishihara Sangyo Kaisha, LTD.

# Paint film appearance of SILKIA

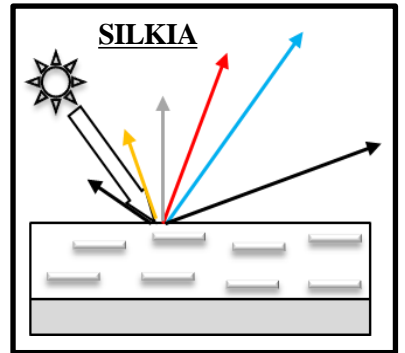
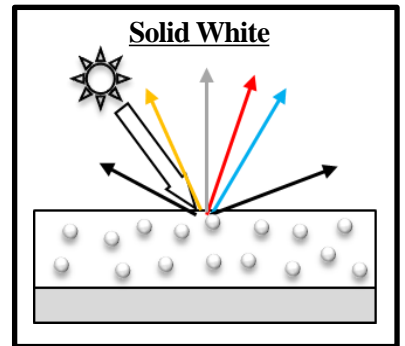
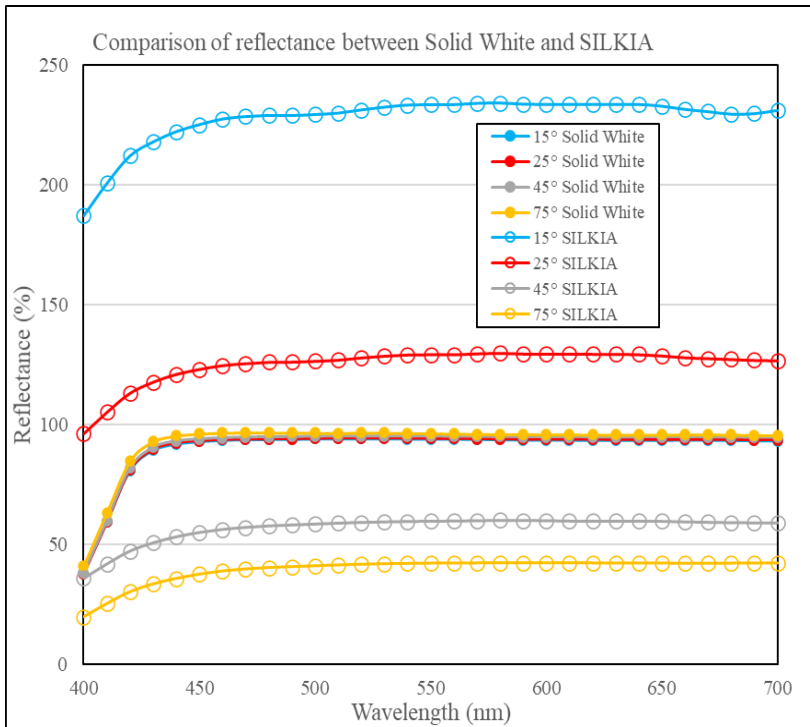
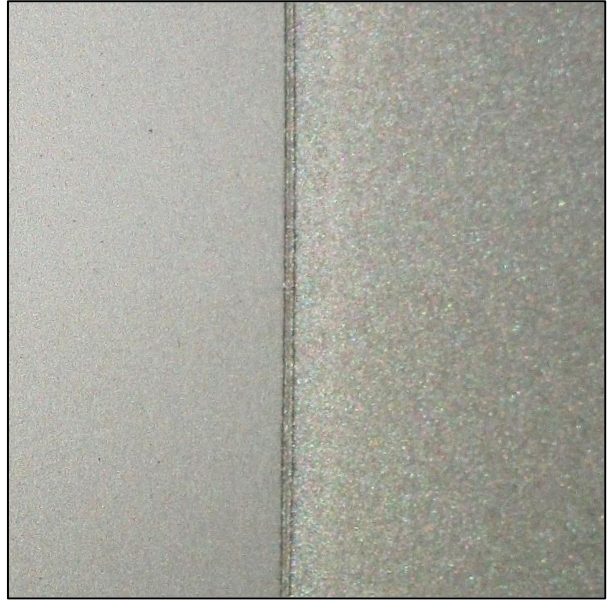
Spherical  
TiO<sub>2</sub>

**SILKIA** Existing  
pearl pigment



**SILKIA**

Existing  
pearl pigment



✓ SILKIA shows very high reflectance in the region near specular reflection.